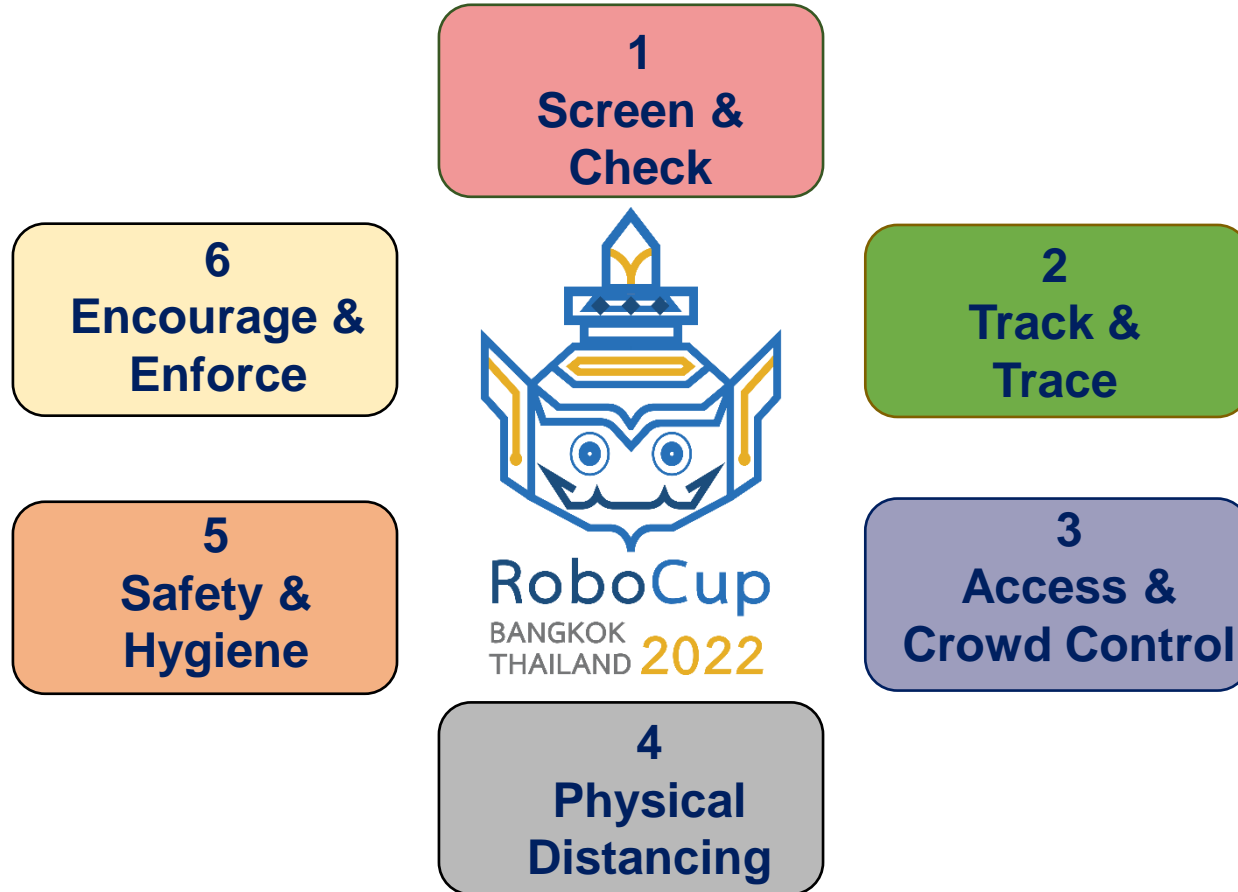


Measures to Prevent Risk from COVID-19



1. Screen & Check

- Body temperature check, not over 37.5 degree Celsius, before entry with mask wearing
- Management of a suspected case

2. Track & Trace

- Thai Chana check-in & check-out
- BITEC & organizer evaluate risk of COVID and record for at least 7 days

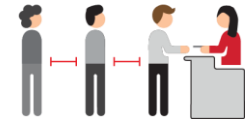
3. Access & Crowd Control

- Limit attendee and density
- Clearly specify entrance and exit



4. Physical Distancing

- Manage holding area with physical distancing
- Mark floor and signage at least 1 m. distance



5. Safety & Hygiene

- Sanitizer and disinfection in service area
- Extra cleaners and frequency
- Extra hand sanitizer
- Air ventilation with UVC system
- Food safety experience



6. Encourage & Enforce

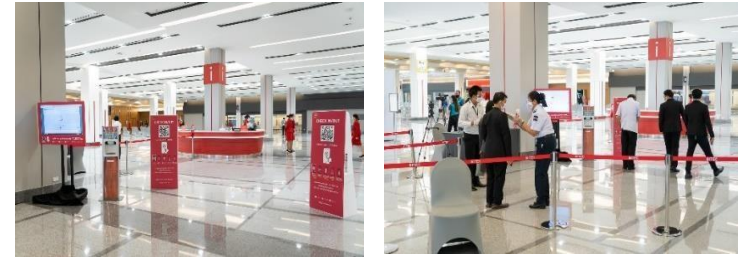
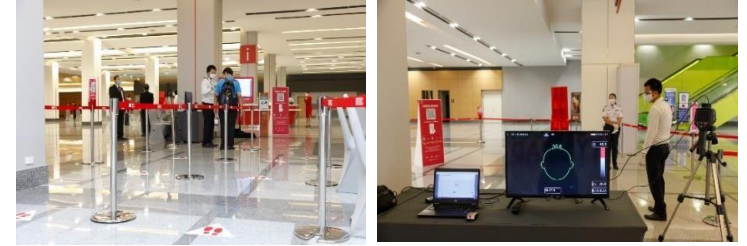
- Elevated measures in place
- Elevated measures for venue staff
- Elevated measures for organizer, contractors, exhibitors, participants and all attendees



Screen & Check

By Venue:

- Infrared thermal scan units and equipment at main entrances for body temperature screening (not over 37.5 degree Celsius allowed)
- Deny entry of attendees/visitors who refuse to wear mask



By Organizer:

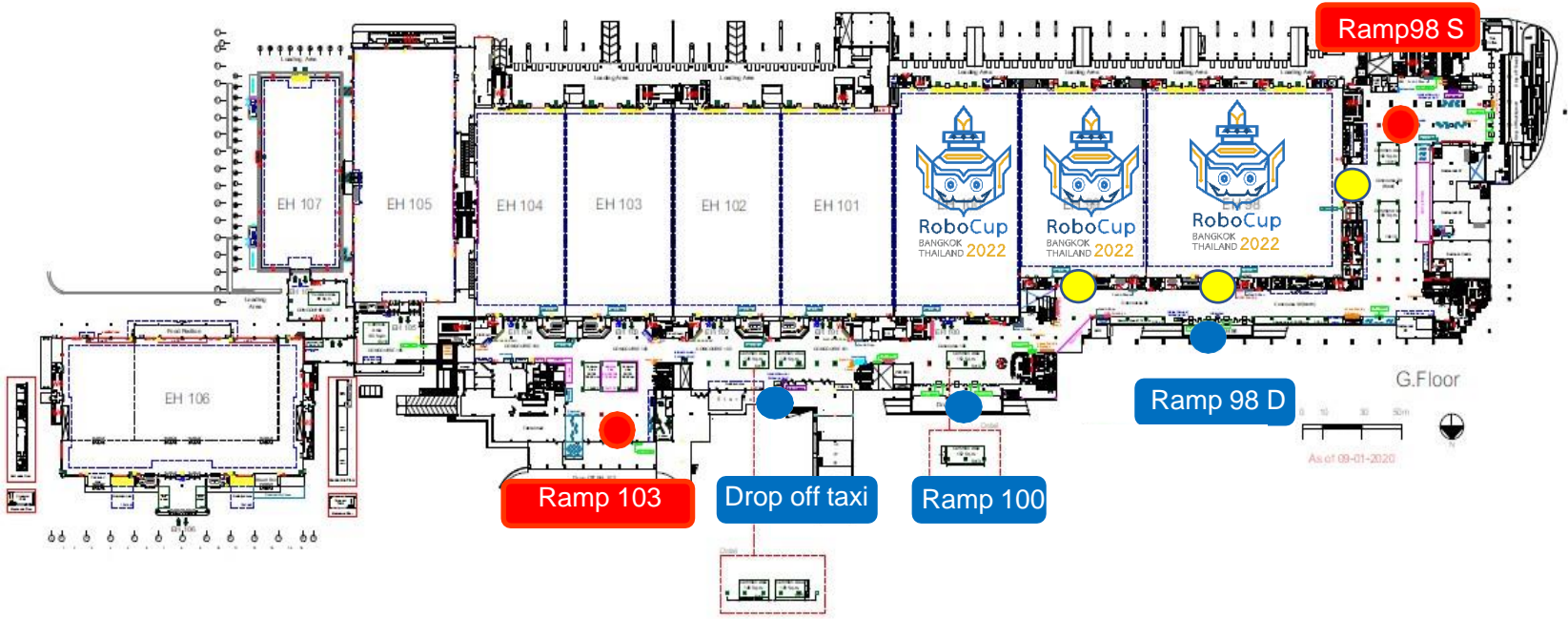
- Thermal scan equipment at hall entrances for body temperature screening (not over 37.5 degree Celsius allowed)
- Deny entry of attendees/visitors who refuse to wear mask



***Mask Wearing is Mandatory**

Screen & Check Points Ground Floor

- Thermal Scanner Camera 3 Locations Infrared
- Thermometer 8 Locations
- Thermal Scanner Equipment 3 Locations

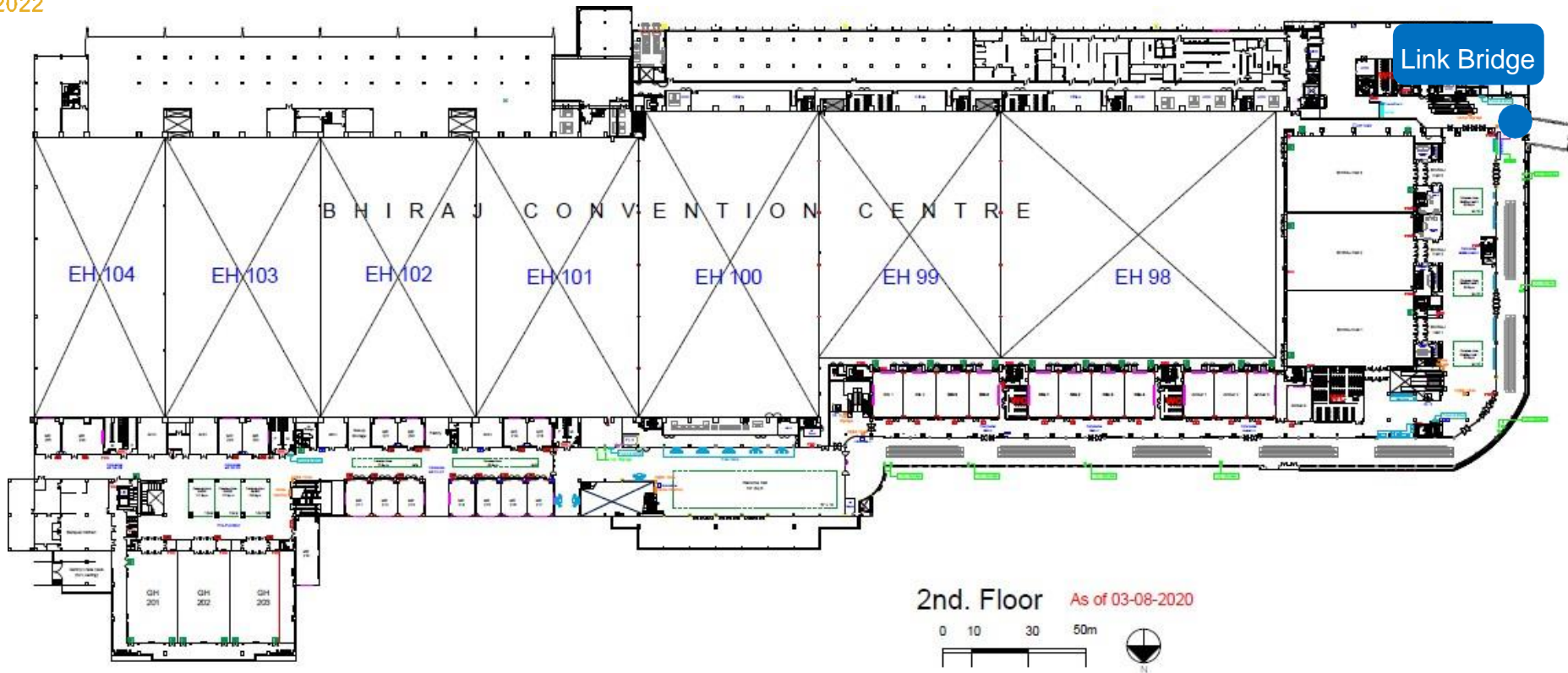




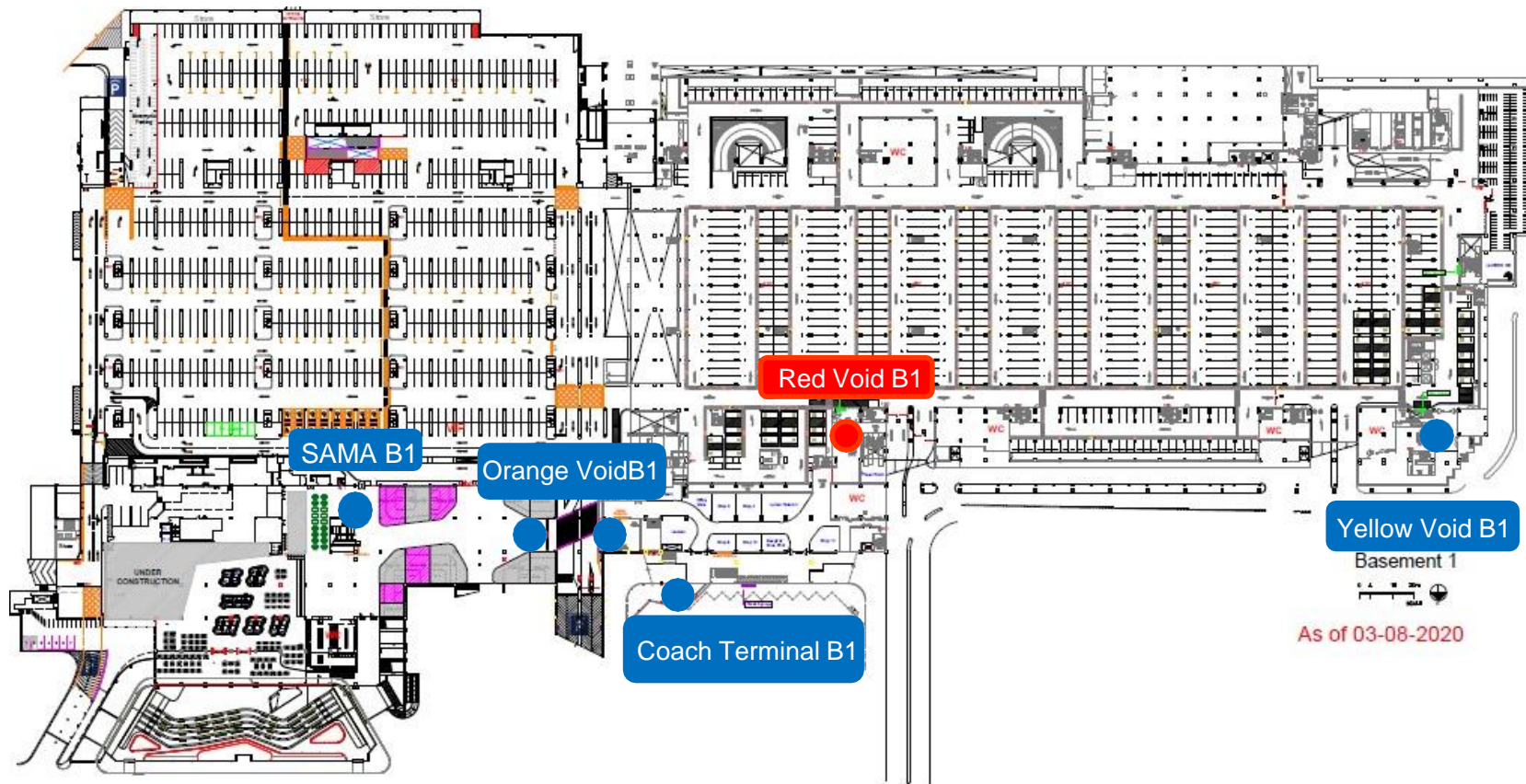
RoboCup
BANGKOK
THAILAND 2022

Screen & Check Point

Second Floor (access from sky train)



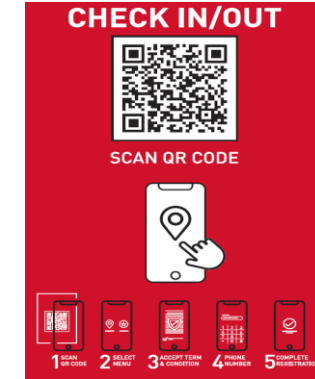
Screen & Check Point Basement (Parking)



Track & Trace

By Venue:

- Scan check-in & check-out at 'Thai Chana' QR code/ Application
- Real-time monitor on the application
- Display monitors on check-in area
- Available for data trace and track



By Organizer:

- Scan check-in & check-out at 'Thai Chana' QR code/ Application at hall entrances.
- Data track & trace by Public Health Office



Access & Crowd Control

By Venue:

- Limit entrances to the concourse & building
- Manage flow in – out
- Manage and limit number of attendee
 - 1 attendee per 4 sq.m.
 - Utilization of Floor Manager & CCTV
- Holding area available by event



By Organizer:

- Specify hall entrance and exit separately
- Manage and limit number of attendee into the hall
- Hall managers to observe and manage control of crowd inside the hall (using human sign to disperse the crowd)



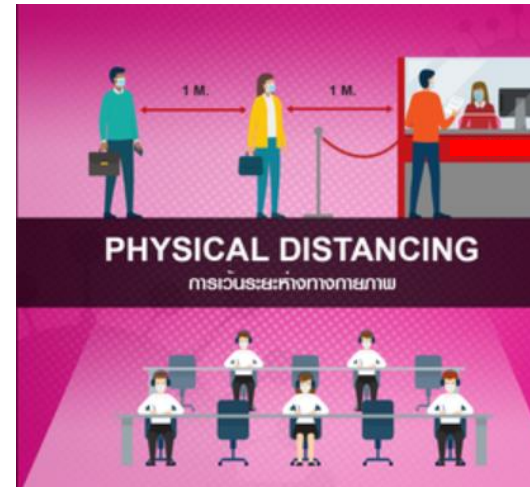
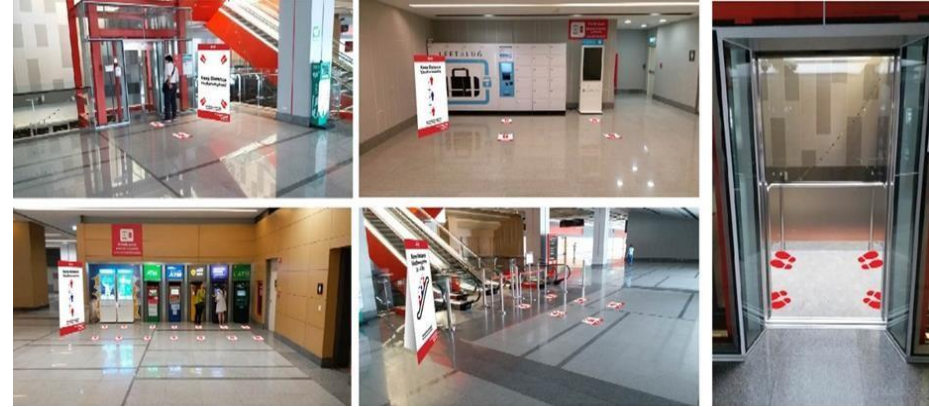
Physical Distancing

By Venue:

- Mark floor and signage to indicate space regulations for all queues and public space
 - At least 1 m. distance
 - 2–3 steps distance on escalators/ travellers

By Organizer:

- Mark floor and/or signage for 1m physical distancing at
 - all registration queues
 - walkway inside the hall
- At least 1m distance for set-up of table and chairs at
 - competition area
 - event's reception and banquet





RoboCup
BANGKOK
THAILAND 2022

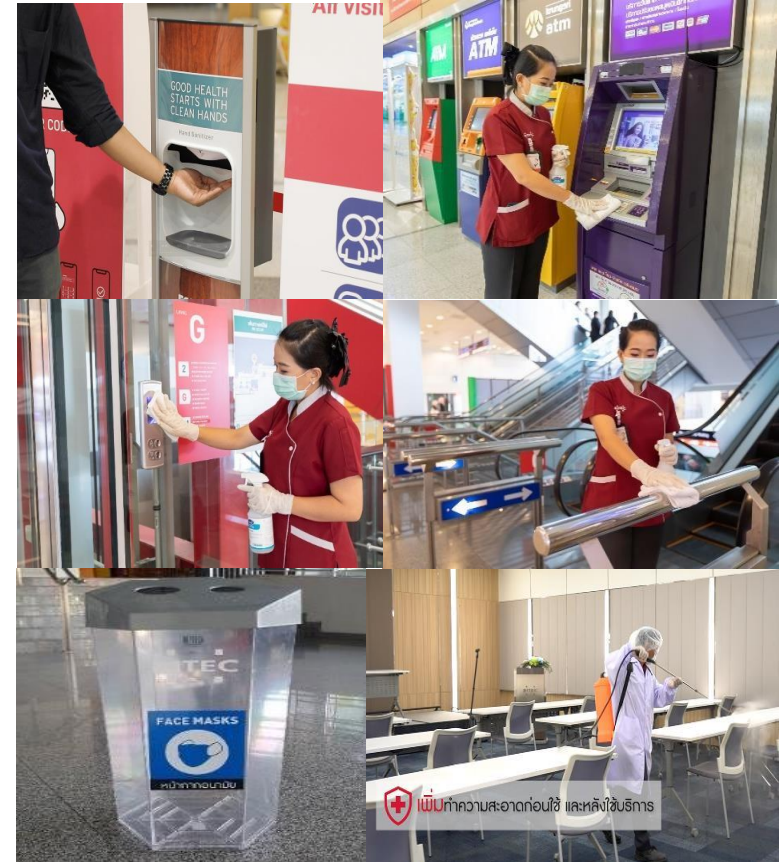
Safety & Hygiene

By Venue:

- Disinfectant spray in public area and service space
- Provide sanitizers at all key venue entrances
- Increase frequency of cleaning and sanitize public areas, restrooms, all venue's facilities and waste disposal
- Extra cleaners to sanitize touch points in public area i.e. lifts, escalators, doorknobs, etc.
- All parking cards sanitized before issuing to drivers
- Temporary close of Kids Zone and Pray Rooms
- Waste management for used masks

By Organizer:

- Extra hand sanitizers at registration, hall entrances and service areas



Safety & Hygiene

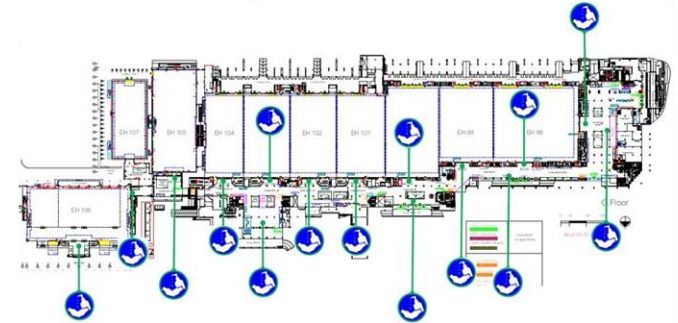
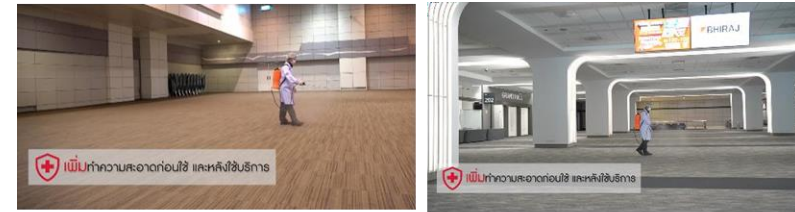
Elevated Measures in place

- Increase UVC system for safety air breath
- Increase air ventilator cleaning and change
- Turn on a ventilation fan during the service at all times to ensure that the restrooms will have a good ventilation system.



Elevated Measures for Service Space, Exhibition

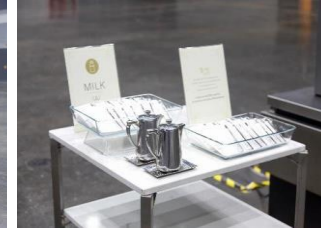
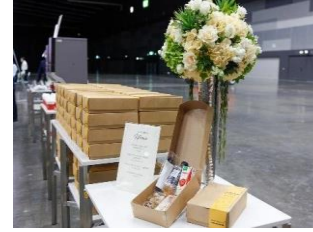
- Disinfectant spray in service space before hand-over, and daily on show-day*
- Increase frequency of cleaning and sanitize service space, touch points, surfaces, and waste disposal
- Provide sanitizers at all key entrances



Safety & Hygiene

Extra Measures for Restaurant, Outlets and Retails

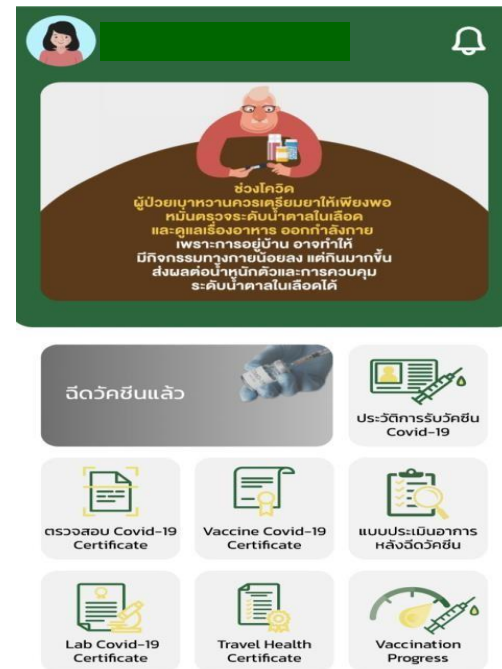
- Pre-packed and individual set menu options
- Sterilized food and beverage services equipment and packaging before service
- Disinfectant service area, tables & chairs after service
- Pre-booking & reservation
- E-payment option, E-card for food court
- Counter-shield/ Table-shield



Encourage & Enforce

Elevated Measures: Venue Staff

- Evaluate the risk of COVID before on-site
- Record Timeline
 - At least 3 days before on-site
 - During on-site
 - 14 days after show
- 100% vaccinated staff
- Identify negative ATK result within 72 hrs. before on-site
- Every 7-day, identify negative ATK result



Encourage & Enforce

Elevated Measures: Organizer / Contractors/ Exhibitors/ Participants

- Evaluate the risk of COVID 7 days before on-site
- Encourage Record Timeline
 - At least 3 days before on-site
 - During on-site
 - 7 days after show
- 100% vaccinated organizer / contractor/ exhibitor/ participants
- Identify negative ATK result within 72 hrs. before on-site
- Encourage for ATK test every 7 days



Encourage & Enforce

Elevated Measures: Visitors / Delegates

- Encourage visitors pre-register online for access to the event.
- Encourage visitors do online self screening to assess the risks of COVID-19 virus transmission before visit.
- Encourage visitors if possible to do ATK test for negative result 72 hrs. before visit.
- Onsite touchless registration system



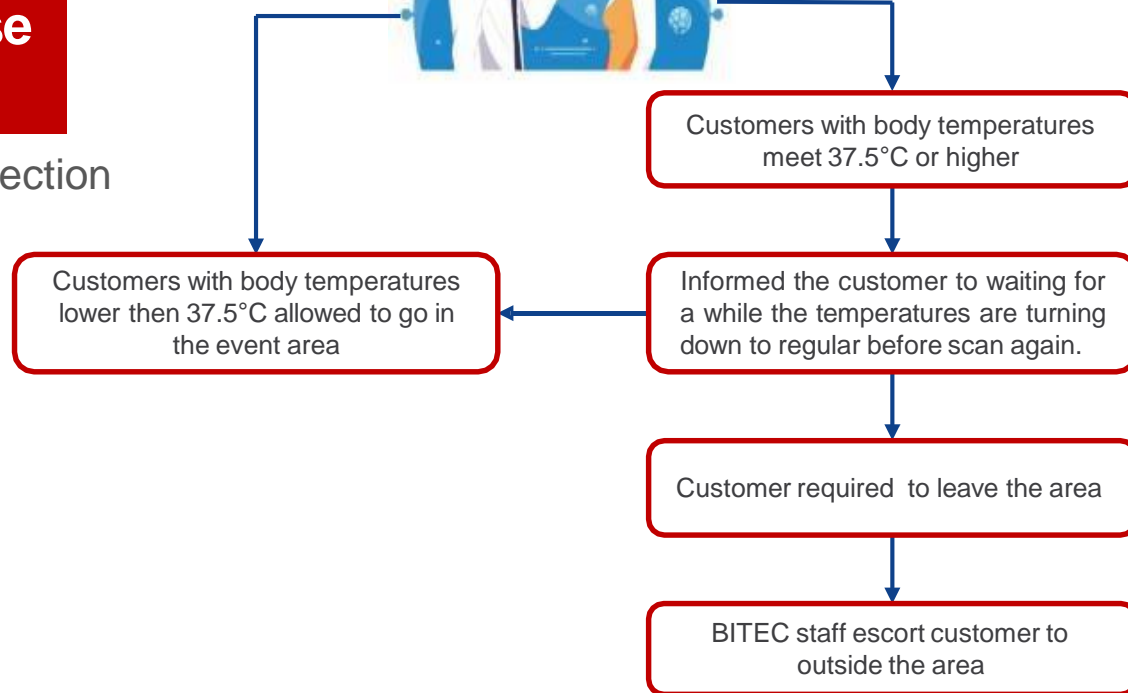
แบบคัดกรองตนเองเพื่อประเมินความเสี่ยงในการแพร่เชื้อไวรัส COVID-19
Self-screening to assess the risks of COVID-19 virus transmission

- เพศ / Gender ชาย / Male หญิง / Female
- อายุ / Age ปี / yrs.
- ท่านมีอาการดังต่อไปนี้หรือไม่? Do you have any of these symptoms?
 - ไข้/ Fever น้ำมูกไหล/ Runny nose เจ็บคอ/ Sore throats
 - จมูกไม่ได้กลิ่น/ Loss of smell ลิ้นไม่รับรส / Loss of taste
 - ไอ/ Cough เหนื่อยหอบ/ Shortness of breath
 - ไม่มีอาการเหล่านี้/ None of these symptoms
- ท่านเดินทางจาก/ ผ่านประเทศ ที่มีการระบาดของไวรัส COVID-19 ในช่วงเวลา 2 สัปดาห์ หรือ ไม่?
Did you travel from/ transit countries which have COVID-19 outbreak within the past 2 weeks?
 ใช่ / Yes ไม่ใช่/ No /
จากประเทศ / from
พักอยู่ในประเทศนั้นกี่วัน How long did you stay?day(s)
เดินทางกลับมานานกี่วัน How long have you left there?day(s)
- ท่านได้ไปยังสถานที่ที่มีความเสี่ยงต่อการติดเชื้อ ภายใน 2 สัปดาห์ ที่ผ่านมากหรือไม่?
Have you ever been at the following places within the past 2 weeks?
 สถานบันเทิง/ Entertainment venue ปอเกมพนัน/ Casino ไม่ใช่/ No
 ชุมชนแออัด/ Mass community
- ท่านได้สัมผัสใกล้ชิดกับผู้ป่วยที่สงสัยติดเชื้อไวรัส COVID-19 ภายใน 2 สัปดาห์ ที่ผ่านมากหรือไม่?
Did you contact with suspected COVID-19 virus patients within the past 2 weeks?
 ใช่ / Yes ไม่ใช่/ No
- ท่านเพิ่งหายจากไข้ไวรัส COVID-19 Have you recovered from COVID-19 virus infection?
 ใช่ / Yes ไม่ใช่/ No
เป็นเวลา / for สัปดาห์ / weeks

On-Site Management of A Suspected Case of COVID-19

Management of a suspected case of COVID-19

BITEC area entry detection





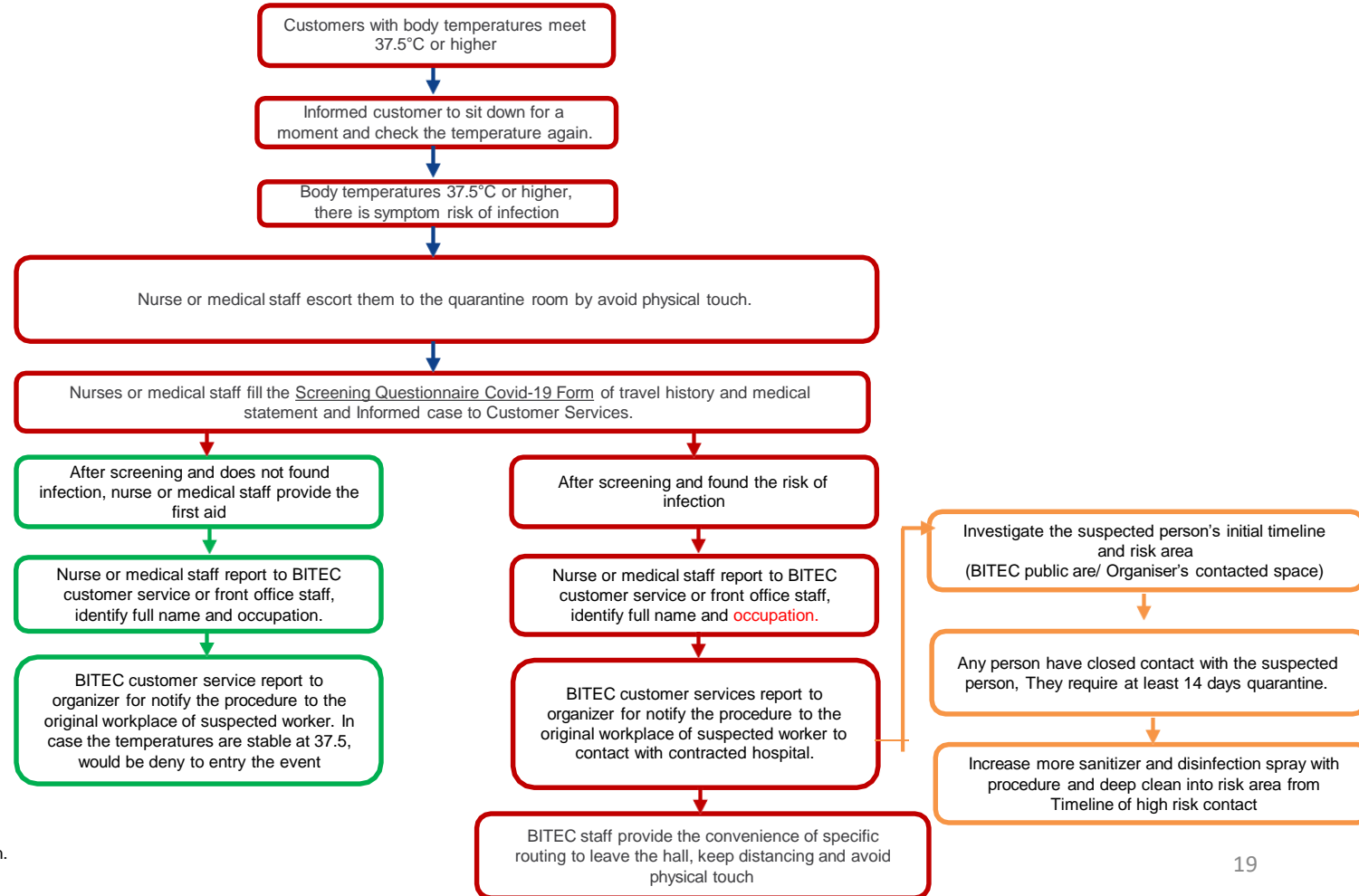
Screen & Check

Management of a suspected case of COVID-19

Procedure of infection detected procedure during event at BITEC

Covid-19 Hotline dial 1422

Remark; regular flu does not guarantee the infected or infection.



Screen & Check

- Management of a suspected case
- Quarantine room separate from public area.
- Surveillance rooms with control measures and intensive health protection procedure, in case of people at risk found.

